

The background of the image shows a close-up of industrial machinery, likely a rubber processing machine. A large, curved metal component is visible on the right side. In the foreground, several sheets of blue, textured rubber are being processed, with some sheets being fed into a machine. The overall color scheme is dominated by various shades of blue, from light to dark. The text is overlaid on this background.

FX **FLEXIX**

Flexibility for your Success

RUBBER, RUBBER-METAL, RUBBER-PLASTIC AND SPECIAL ELASTOMER PRODUCTS

70th ANNIVERSARY

FX
FLEXIX



COMPANY HISTORY



1950

Foundation of FLEXIX, S.A.



1958

Beginning of the cooperation KÄCHELE-FLEXIX with 3 rubber production plants in Germany and Spain



1992

First Spanish company in the technical rubber sector to obtain the ER ISO 9002 certification



2003

New production plant with automated rubber mixing room



2006

Automation of the production processes



2013

KÄCHELE reaches 91% of FLEXIX shareholding



2016

Achievement of the ISO 14001



PROCESSES

Technology to improve quality

► Injection

- Injection of complex customized rubber parts
- Automated production cells
- Lean processes with cleanliness requirements



► Over - Injection

- Vulcanization over metal, plastic and rubber bonded parts
- Automated adhesive machines
- Fully automatic rubber-metal production



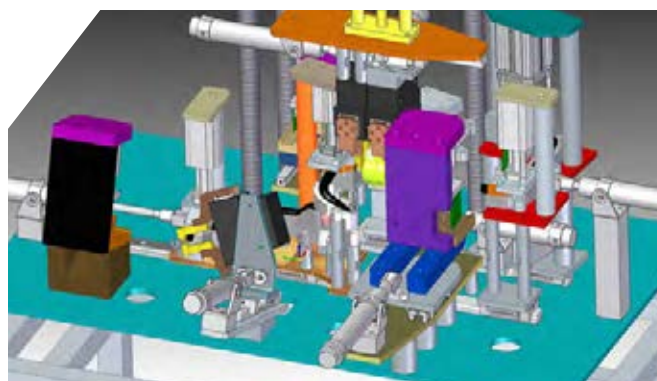
► Extrusion

- Leader in parts development
- Automated finishing of the parts
- Marking of parts with laser and stamping



► Assemblies

- Automated assembly and verification of existence and components position
- Leakage verification



MARKETS

► Automotive

ANTIVIBRATION

Suspension and shock absorption elements



SILENTBLOCKS

Rubber-metal parts for vibration and noise attenuation



DUCTS

Air and fluid conduction systems



CLEAN AIR DUCTS

Parts with higher cleanliness requirement



JOINTS

Sealings to reduce vibration, noise and misalignments



HOLDERS

Supports for transmissions, shafts and links



TRUCKS & BUSES

Parts with higher requirements and lower demands



VALVES & PUMPS

Parts to regulate fluids and gases

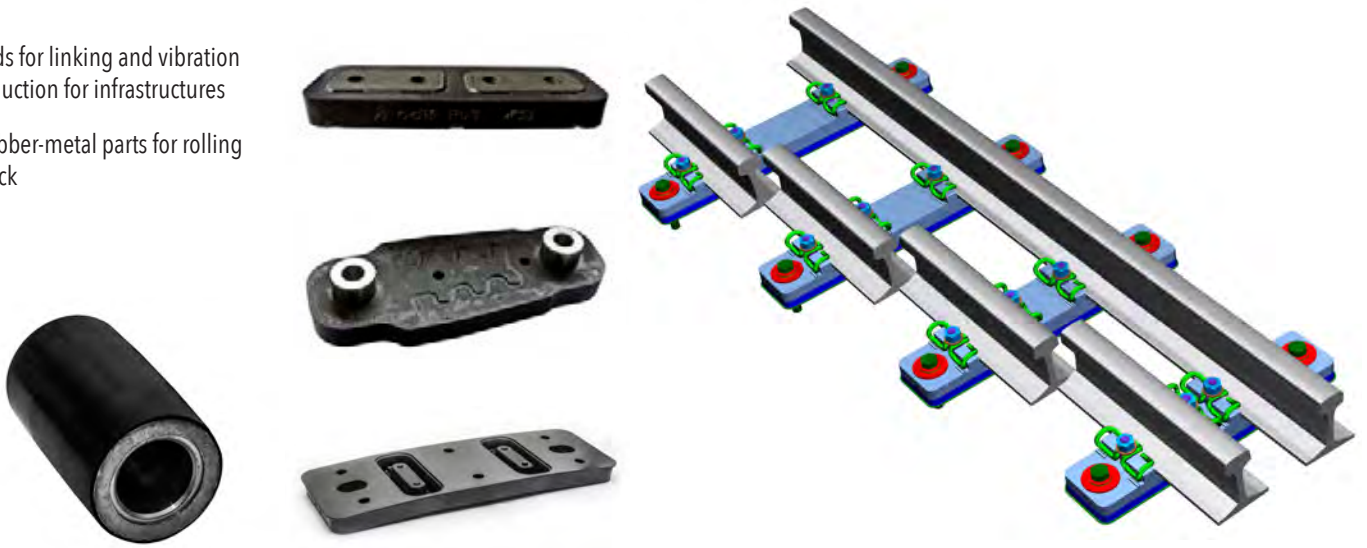


Advanced solutions for the most demanding sectors

► Railway

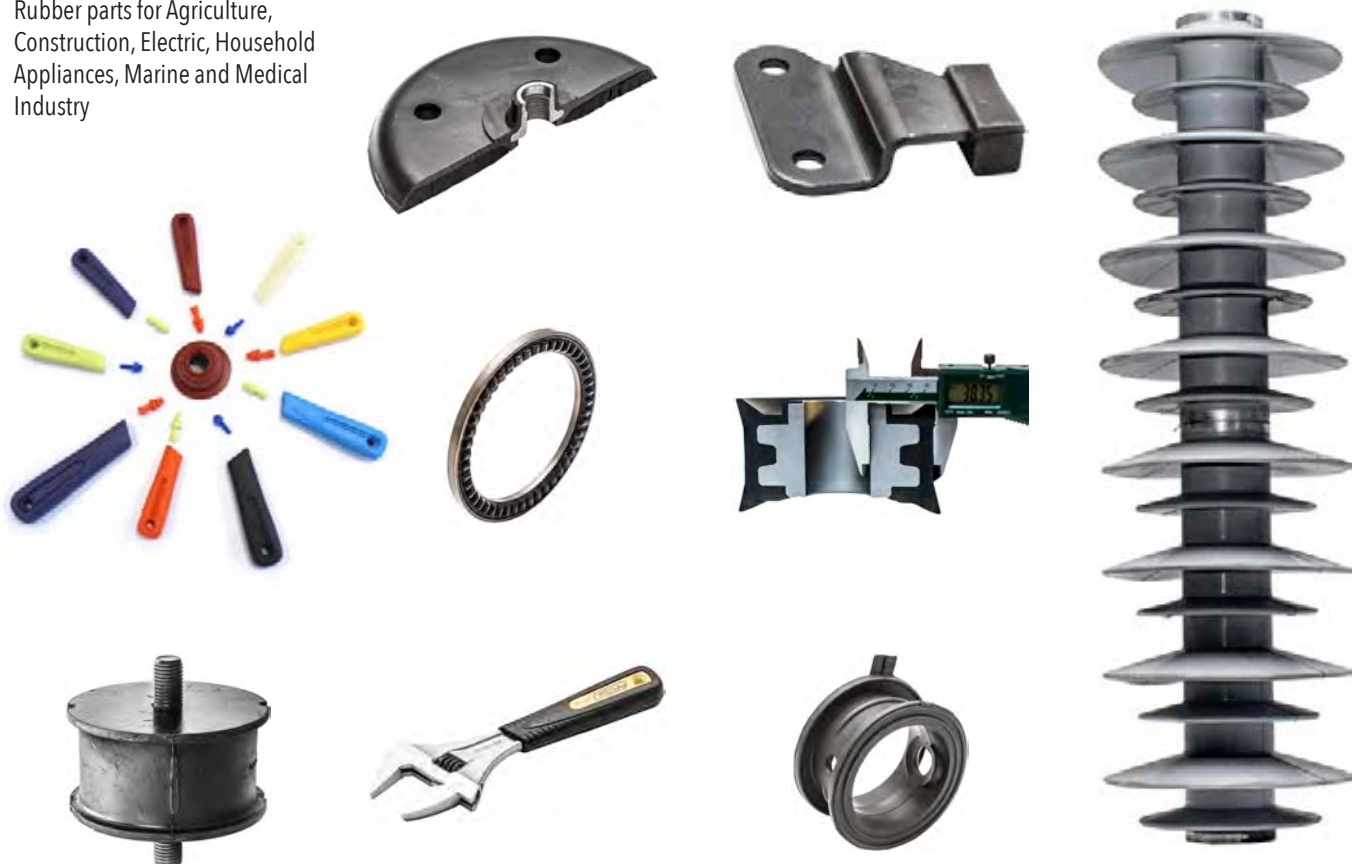
Pads for linking and vibration reduction for infrastructures

Rubber-metal parts for rolling stock



► Industrial Applications

Rubber parts for Agriculture, Construction, Electric, Household Appliances, Marine and Medical Industry

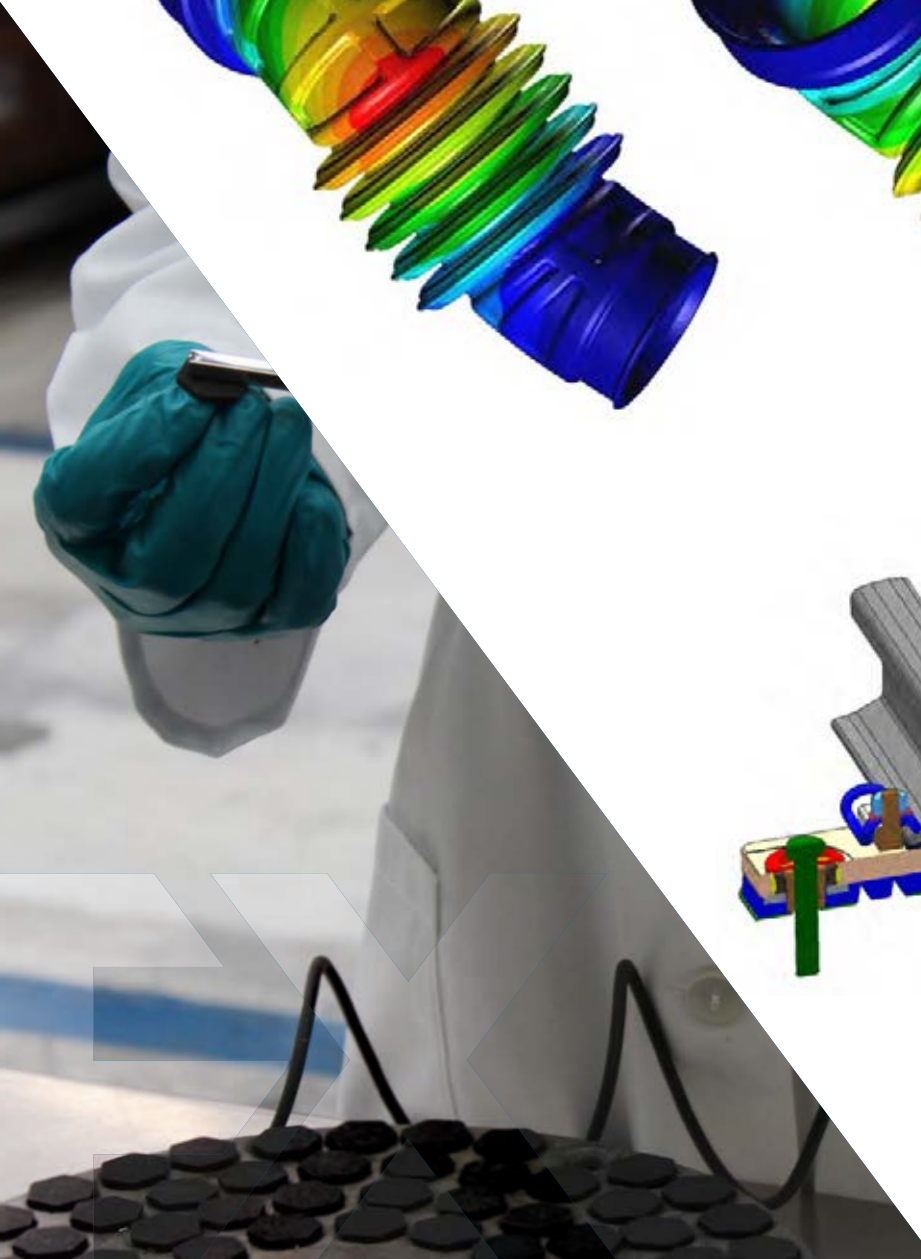
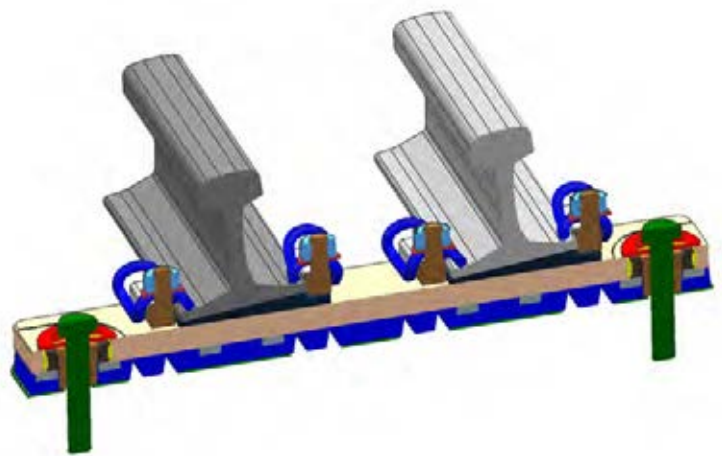
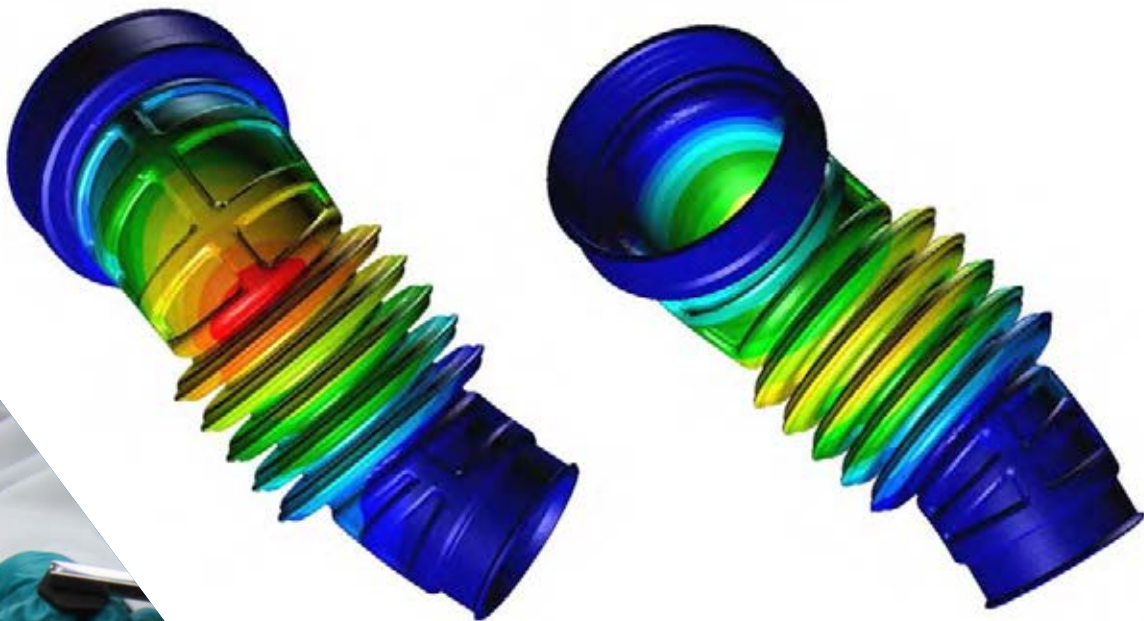


R+D

► Product Development

Geometry design and optimization
Design and maintenance of toolings
3D printed stiff and flexible parts

3D rapid prototyping of tooling for vulcanization
Finite Element Analysis



Added value and continuous improvement

► Mixture Development

Elastomers: NR, SBR, EPDM, CR, NBR/HNBR, ECO, AEM, ACM, VMQ/Silicone, FKM/FPM

Mixtures development according to the specific needs

Inhouse automated mixture production

Mixture control with physical, rheological and characteristics analysis

Static, dynamic, aging, durability and corrosion tests



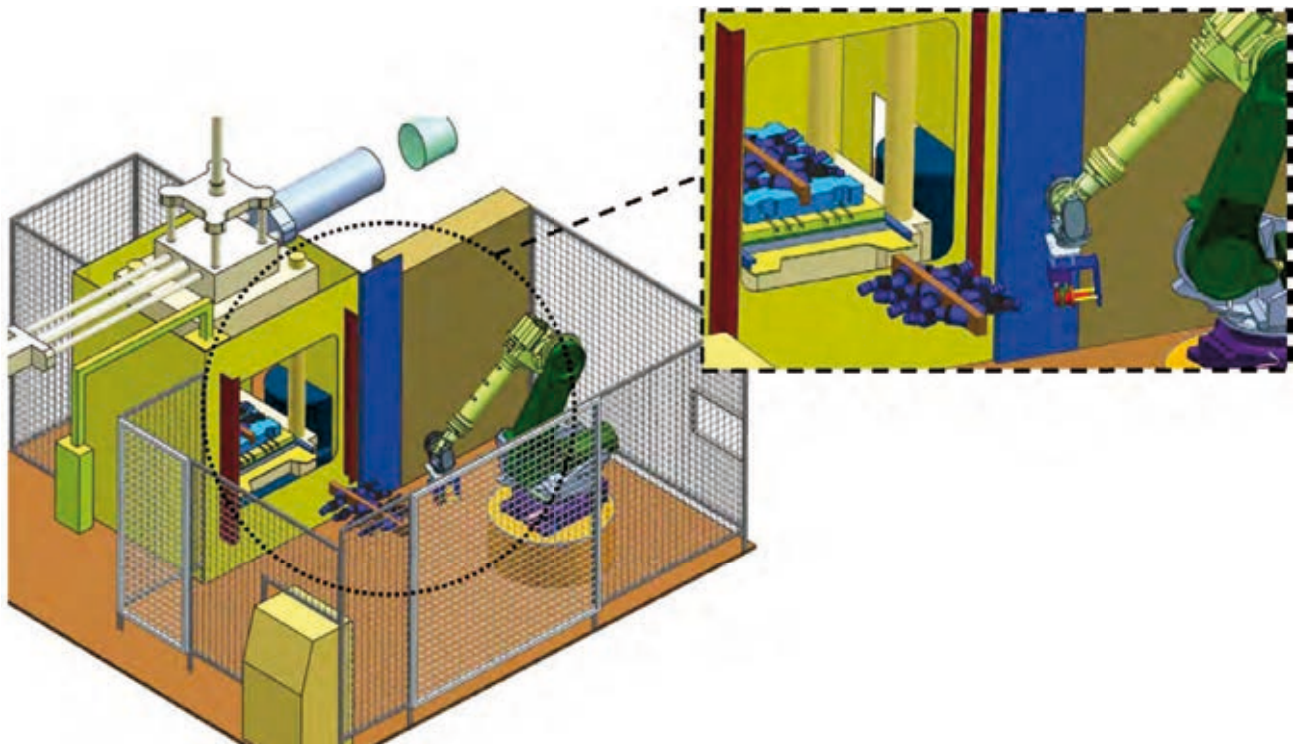
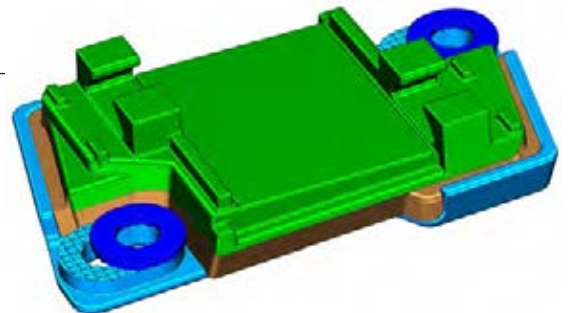
► Process Development

Design and construction of automatic machines for robust processes

Machines for automatic adhesive application and measurement

Solutions for automated assembly and component verification

Computer aided quality control





FX FLEXIX

Flexibility for your Success

Polígono Industrial Pinoa, 1 D
48170 Zamudio (Spain)

Tel.: +34 944 977 180
Fax: +34 944 977 190

E-mail: flexix@flexix.com

www.flexix.com

